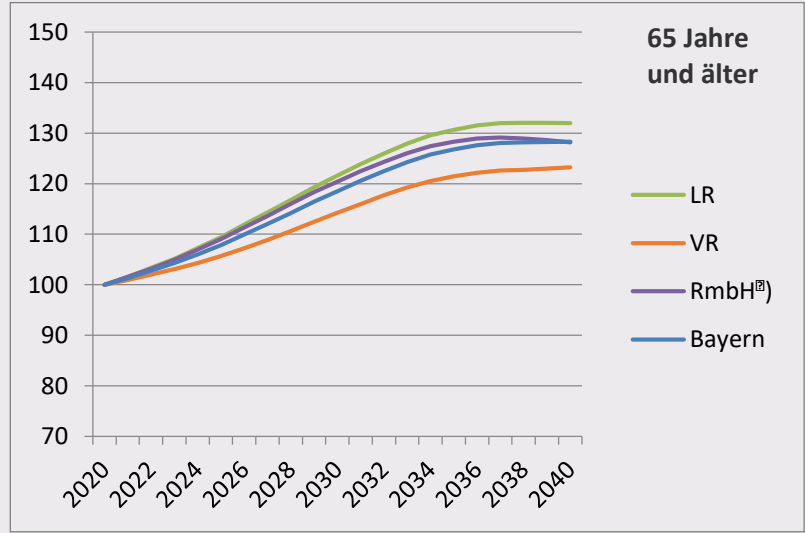
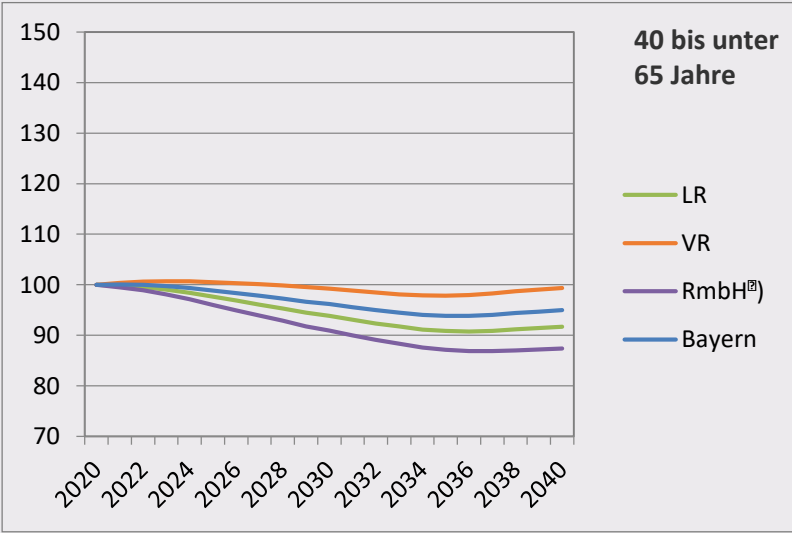
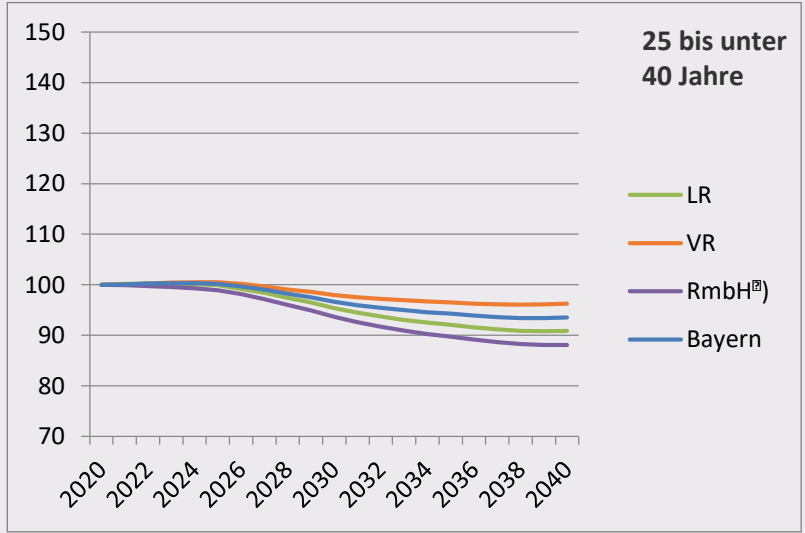
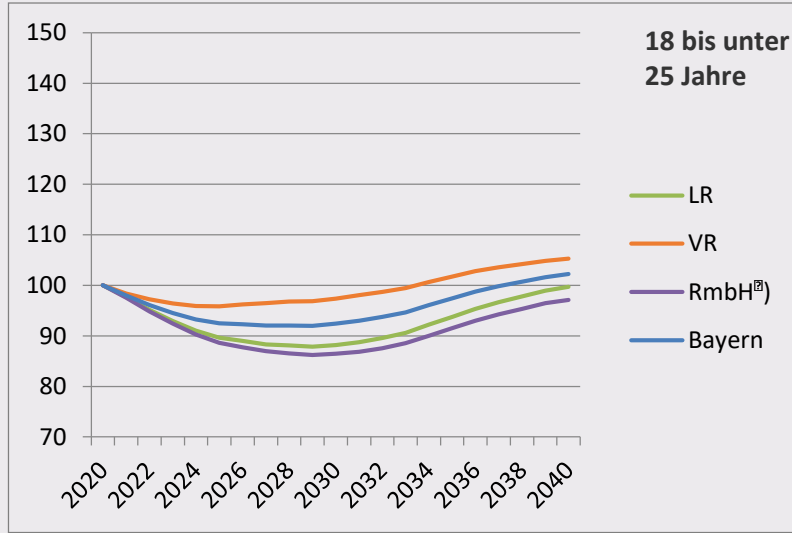
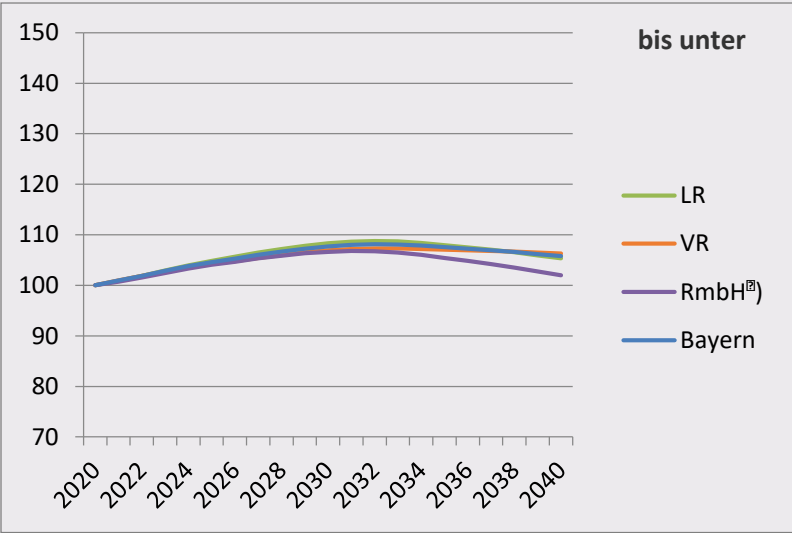


Grafik 1.5.2 Bevölkerungsentwicklung 2020 bis 2040
 nach Altersgruppen und LEP-Gebietskategorien¹⁾
 (Vorausberechnung)
 Index 2020 = 100



¹⁾ kreisscharfe Abgrenzung.
²⁾ LEP-Teilfortschreibung 2018.